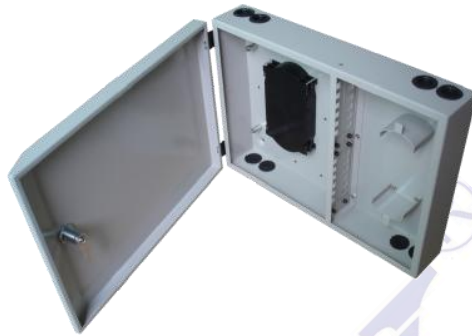


Indoor Optial Fiber Wall-Mount Distribution Box

(WDB-IW- II)

1、 Cable Drawing



2、 Description

Indoor Fiber optic wall-mount distribution box are designed for either pre-connectorized cables, field installation of connectors, or field splicing of pigtailed. They offer an ideal solution for building entrance terminals, telecommunication closets, main cross-connections, computer rooms and other controlled environments.

3、 Features

- The box use good quality Cold Rolled Steel material
- The cabinet has functions of cable termination, splicing, distribution and cross-connection
- Solid and fully-closed structure with the advantages of good performance of dust-proof, pleasing and neat appearance
- Wall mountable installations
- Ideal for indoor uses – cable entrances & exits located on both top and bottom
- Lock provided on every cabinet ensures the safety of the fibers
- The central adapter board separates the incoming cables and the exiting fibers
- Central adapter board is movable for easier installation (for capacity max. 48 cores.)
- Adoptable adapter types: FC, SC, LC/Duplex

4、Application

- CATV, LAN, WAN network
- FTTX Systems
- Telecommunication network
- Suitable for Pigtail, ribbon and bunch cable connect distribution
- Used for wall-mounted applications

5、Specification

Item	Parameter	
Adaptor Type	SC,FC,ST,Duplex SC,Duplex LC	
Capacity	12, 24, 48 fibers	
Body Material	Cold rolled steel or stainless steel	
Surface Treatment	Powder coating black or white color	
Installation Method	Wall mounted(pole mounted optional)	
Size Dimension(mm)	12 F	320(W) x200(H)x70(D)
	24 F	410(W) x295(H)x97(D)
	48 F	510(W) x375(H)x160(D)
Strengthen Member Fixation	Yes	
Bending Radius(mm)	>40	
Working Temperature	-20 (°C) to +60(°C)	
Storage Temperature	-25 (°C) to +70(°C)	
Relative Humidity	<90%RH	